

## **GL1 OMNI FRAMELESS GLASSWALL PARTITIONS**

---

### **WARRANTY**

*Hufcor Partitions are guaranteed against defects in material and workmanship for a period of one year, excluding any abuse to the product and glass.*

---

The Hufcor Partitions for this installation have been custom made to the architect and owner's specifications. Each partition has been carefully fabricated and installed to provide many years of trouble-free service.

The key to the life of the product is proper operation and care. The correct operation and recommended care are outlined in this Owners Manual for your guidance.

If any malfunction of these partitions occurs, please phone your local Hufcor Distributor for service. This must be done immediately since Hufcor cannot be responsible for damages that result from delays or failure to advise Hufcor or Hufcor's local Distributor.

**This partition was sold and installed by:**

**When calling either your Hufcor Distributor or Hufcor, please have the following information:**

**Job Name:**

**Hufcor Order #:**

**Installation Date:**

**Description of the Problem:**

**Person to Contact:**

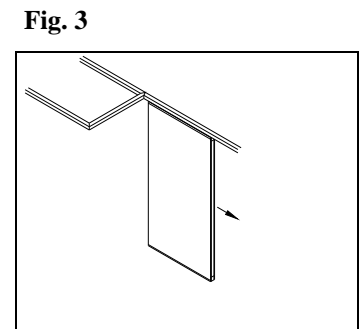
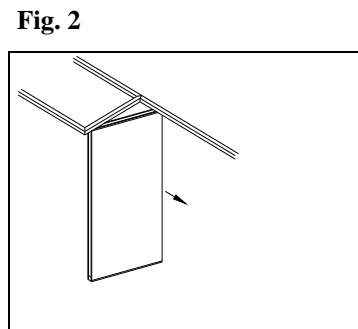
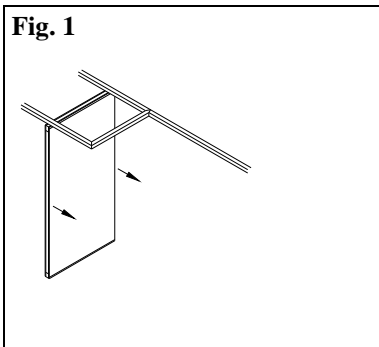
## How to Operate Omni-Directional Panels

Omni-directional partitions consist of individual panels supported by two carriers on each panel. Panels will have "brush" sweep top and bottom seals.

### Setting Up A Partition-

Conduct all operations SLOWLY. Safe operation requires moving panels into place one at a time. Stand in the center of the panel face. Using both hands, grasp it by the edges as high as possible and gently pull it toward you. (Fig. 1) Carefully maneuver it out of the storage area. (Fig. 2 & 3) Move the panel down the run to the required position. Once in place, you will need to engage the floor pins into the floor plates to secure each panel in place.

**Hint:** While moving the panels through intersections avoid stopping. The carriers may stop in an intersection and appear stuck. If this happens, push panel back in direction it came from. Try again and avoid stopping while the panel is in an intersection.



### Setting The Floor Pins-

1. **Edge Floor Pins:** Once panel is in position, push down on the small pin sticking horizontally out of the slotted end cap of the bottom rail of the panel. This will set the floor pin into the floor plate and lock the panel into place.
2. **Face activated Floor pins:** Trail panels in some layouts and anchor panels with inset pass doors hinged to them will have face activated floor pins. Once panel is in position, push down on the small pin sticking out of the face of the bottom rail of the panel. This will set the floor pin into the floor plate and lock the panel into place.

### Optional Thumb turn or Key Cylinder:

Again, once the panel is in position, turn the thumb turn or insert the key into the keyed cylinder and rotate to set the deadbolt cam into the floor receiver. This will lock the panel into place.

### Optional Pass Door Panel:

The pass door panel is a combination of an anchor panel and a passdoor panel. The anchor panel is the panel you will be moving in the partition run. Pass doors may be mounted on the lead side or the trail side of an anchor panel. Refer to the data sheets for proper orientation when installing into the track. With the anchor panel in place, set the face activated floor pin at the hinge point into its floor plate as described above. There may also be a edge activated floor pin located on the trail end of the bottom rail that will also need to be set as described above. Once the anchor panel has been locked into the floor, all you will need to do is pull on the passdoor panel to release it from its magnetic holder. If equipped, the passdoor panel may be locked to prevent opening with a thumb turn or keyed cylinder floor bolt.

## Setting the Final Closure Panel-

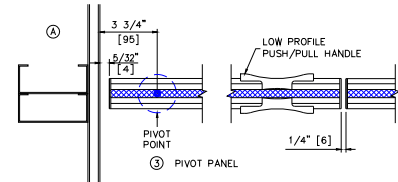
### a. Trail Panel

Move the last panel into place and flatten out. Slide panel forward so lead edge of panel engages with the trail pin of the previous panel. Push down the face activated floor pin protruding out of the face of the trail end of the bottom rail. There will be a gap from the trail end of the panel to the wall that is necessary to set up and stack the panels.

### b. Optional Pivot Closure Panel

The pivot panel is a full height panel that functions similar to any building door. When all panels in the opening have been sealed in place, close the pivot panel.

Opt. Pivot Closure Panel



## Stacking The Partitions

1. If the partition has a pass door, when you get to the anchor/pass door panels, release any thumb turn or locking bolt on the pass door and swing until it connects with the magnetic stop. Release the floor pin and/or thumb turn or key lock on the anchor panel. The anchor panel is now free to move to the stack.
2. Open pivot panel as far as it will go.
3. Lift up on the floor pin that is on the trail end or face of the bottom rail.
4. Disengage panel from adjoining panel and move down the track into the stack area (Fig. 1).

## CARE AND MAINTENANCE

### Anodized Aluminum Rails:

The anodized surface of your Hufcor partition may be cleaned with warm water and mild soap. Sponge the surface clean and wipe dry with a soft cloth. A soft brush may be used if dirt is difficult to remove.

**CAUTION: Do not use lacquer thinner or other strong chemicals. Many floor-cleaning materials contain chemicals harmful to the aluminum. Care should be taken when using such compounds near the partition.**

### Clear Glass Surfaces:

The clear glass can be cleaned with standard glass cleaners.

**CAUTION: If the glass is special etched glass or has any special decorations, see specific cleaning instructions supplied with the panel shipment.**

## TROUBLESHOOTING GUIDE

| PROBLEM                         | CAUSE   | TREATMENT  |
|---------------------------------|---|--|
| Panels hanging out of plumb     | 1. Loose or broken trolleys<br>2. Broken trolley support beam           | 1. Tighten loose carriers to return panel to plumb.<br>2. Replace broken carrier or support beam |
| Panels sticking or hard to move | 1. Dirt in the track<br>2. Misaligned track joints<br>3. Broken trolley | 1. Clean track<br>2. Align joints<br>3. Replace trolley  |
| Abnormal noise during movement  | 1. Broken trolley<br>2. Misaligned track joints                         | 1. Replace trolley<br>2. Align joints  |
| Broken or worn trolleys         | 1. Bad track joints<br>2. Abusive handling at "T" or "L" intersections. | 1. Realign track joints. Replace trolleys.<br>2. Replace trolleys and retrain personnel          |
|                                 |   |  |
|                                 |   |  |

**RECOMMENDED PREVENTIVE MAINTENANCE**

We strongly recommend that you contact your Hufcor Distributor to perform an annual inspection for your partitions (six months if your partitions are used daily). Regular maintenance will keep your partitions in good working condition and make certain they perform properly for many years to come. An annual inspection includes:

1. Clean and lightly lubricate all track running surfaces.
2. Check trolleys for any signs of abnormal wear or breakage. Replace as needed.
3. Check out-of-plumb panels (indicating loose trolley bolts). Correct by adjusting to plumb and tightening trolley nuts.
4. Check any exposed bolts in panel horizontal rails - tighten if required.
5. Check track misalignment at all joints and intersections - correct any misalignment.
6. Check pivot closure and adjust as needed.
7. Operate pass door and adjust as needed.

**Hufcor, Inc.**  
**PO Box 5591, 2101 Kennedy Rd., Janesville, WI 53547**  
**800/356-6968; Service & Installation Dept: 800.542.6870 or 608.756.1241; FAX: 608.756.1246**  
**Website: [www.hufcor.com](http://www.hufcor.com)**